



## **StoSilent Modular 230** Installation instructions

# Installation instructions for StoSilent Modular 230

Use the Sto suspension set provided to install StoSilent Modular 230 on the ceiling.

## Standard suspension sets:

Cable hanger length 2.500 mm. At least two pre-assembled carrier profiles are located on the rear side of the ceiling element. Using these profiles, the ceiling element can be suspended and removed. We recommend that two people install the element.

### Note

The suspension set includes 4 nail anchors made by Fischer, type FNA II 6 x 30 M6/5 in accordance with ETA-06/0175 annex 1-2 for the installation of ceiling fasteners in concrete. The relevant documents, declaration of performance, instructions and safety information are available at [www.fischer.de](http://www.fischer.de).

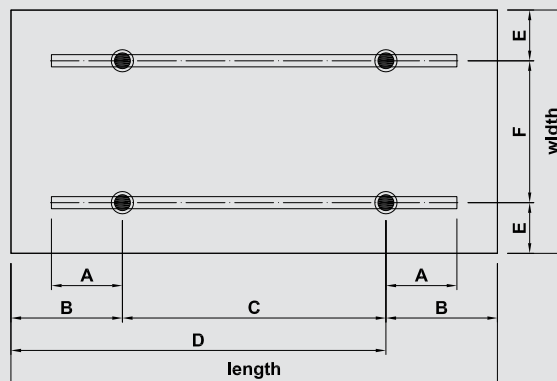
### Tools required:

- White cotton gloves
- Ladder
- Tape measure
- Pencil
- Spirit level
- Drill
- Suitable drill bit
- Suitable screws
- Suitable retaining elements (anchors, etc.)

### Note

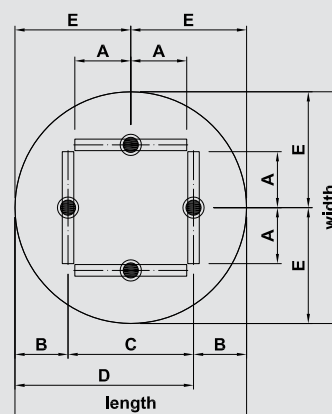
Install the ceiling element packed in its foam film. Unpacking is the last installation step. Do not place the element on a corner or edge but store it flat to prevent any damages.

### Position and dimensions



● Suspension points

### Position and dimensions for the round ceiling element



● Suspension points

If several ceiling elements are installed in a bond, we recommend spacing them approx. 50 mm apart, due to any possible installation tolerances. Depending on the fixing substrate, select suitable anchors and screws that are sufficiently load-bearing. Please observe structural and building physical aspects during installation. Wear clean gloves when installing the StoSilent Modular 230 ceiling element and only transport it by the carrier profile on the rear side. When installing on a ceiling, always suspend the element from at least four points. The following tables and diagrams detail load assumptions and suspension points.

### Suspension point dimensioning for ceiling installation

Element length in mm	Element width in mm	A	B	C	D	E	F
2400	1200	350	550	1300	1850	250	700
2400	800	350	550	1300	1850	250	300
1200	1200	50	250	700	950	250	700
Diameter 1200 mm		290	275	650	925	600	–
Special dimension		On request					

- Dimensions relate to the outer edge of the element.

## Fixing to the ceiling



### Delivery includes:

- 4 pieces Ceiling fasteners M13 x 1 with female thread M6
- 4 pieces Screw caps M13 x 1
- 4 pieces Steel wires, diameter 1.5 mm, with pressed end stop, length 2.500 mm
- 4 pieces Cable holders
- 4 pieces Serrated lock washers M6
- 4 pieces Hexagon nuts M6
- 4 pieces Rail sliders

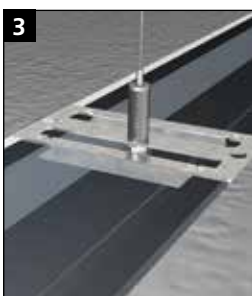


Mark the fixing points on the ceiling in accordance with the table "Suspension point dimensioning for ceiling installation". Fix the ceiling fastener M13 x 1 to the ceiling. Lead the wire cable through the screw cap. Then screw the screw cap to the ceiling fastener.

Please observe the manufacturer's specifications when using the nail anchor in concrete. Drill-hole depth: min. 40 mm and nominal diameter of the drill bit: 6 mm. The anchor expansion of the nail anchor is achieved by tightening the nut; loosen the nut again afterwards.



Screw the rail sliders to the cable holder with the M6 hexagon nut and the serrated lock washer. Push the wire cable through the cable holder and adjust the running rails to working height. Then raise the ceiling element to working height and place it on mounting blocks if necessary.



Push the running rails into the carrier profiles and align to the position marked ex works. Re-adjust the suspension height by applying pressure to the cable holder. To do this, raise the ceiling element on one side by approx. 30 - 40 cm and pull the wire ends diagonally to the carrier profile. Then do the same on the opposite side and adjust the element in stages to its final height. Finally, align the ceiling element with a spirit level and remove the foam film from the ceiling element.

### Load assumptions for ceiling installation

Element length	Element width	Load per suspension point	Weight force for each suspension point
2400	1200	6.25 kg	62.5 N
2400	800	4.25 kg	42.5 N
1200	1200	3.00 kg	30.0 N
Diameter 1200 mm		2.75kg	27.5 N
Special dimension		On request	

Sverige  
Sto Scandinavia AB  
Box 1041  
SE-581 10 Linköping  
Besöksadress:  
Gesällgatan 6, SE-582 77 Linköping  
Telefon 013-37 71 00  
Fax 013-37 71 37  
kundkontakt@sto.com  
www.sto.se

Danmark  
Sto Danmark A/S  
Avedøreholmen 48  
DK-2650 Hvidovre  
Telefon +45 70 27 01 43  
kundkontakt@sto.com  
www.stodanmark.dk

Finland  
Sto Finexter Oy  
Suokallionkuja 8 G  
FI-01740 Vantaa  
Phone +358 201 104728  
asiakaspalvelu@sto.com  
www.sto.fi

Norge  
Sto Norge AS  
Waldemar Thranes gate 98A  
NO-0175 Oslo  
Telefon +47 66 81 35 00  
info.no@sto.com  
www.sto.no